

Tile & Stone Floor Performance Testing

ASTM C 627 In-Situ Robonson Floor Testing

*Professional Consultants
 PROCON provides specialized
 technical consulting and equipment
 for conducting in-situ performance
 testing of ceramic tile and stone floor
 assemblies in accordance with
 ASTM C627 test protocol, also
 known as Robonson Floor Testing*

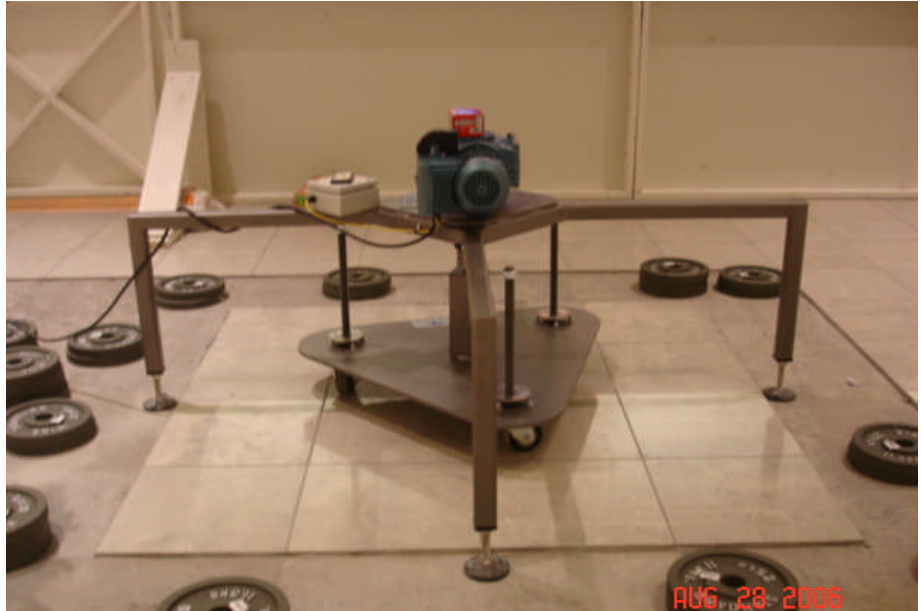
Applicable industry standards
 ASTM C 627

SERVICE REQUIREMENTS
Find required performance level and choose installation method that meets or exceeds it. Performance results are based on ceramic tile meeting ANSI A137.1, or tile designated by tile manufacturer.
EXTRA HEAVY: Extra heavy and high-impact use in food plants, dairies, breweries, and kitchens. Requires quarry tile, packing house tile, or tile designated by tile manufacturer. (Passes ASTM C627 cycles 1 through 14.)
HEAVY: Shopping malls, stores, commercial kitchens, work areas, laboratories, auto showrooms and service areas, shipping/ receiving, and exterior decks. (Passes ASTM C627 cycles 1 through 12.)
MODERATE: Normal commercial and light institutional use in public space of restaurants and hospitals. (Passes ASTM C627 cycles 1 through 10.)
LIGHT: Light commercial use in office space, reception areas, kitchens, and bathrooms. (Passes ASTM C627 cycles 1 through 6.)
RESIDENTIAL: Kitchens, bathrooms, and foyers. (Passes ASTM C627 cycles 1 through 3.)

PROFESSIONAL CONSULTANTS INTERNATIONAL, LLC

Consulting Architects & Engineers
 Construction Technology
 30 Tower Lane
 Avon, CT 06001
 Office (860) 673-9529
 Fax (860) 674-0094

email: info@proconweb.com
 website: www.proconweb.com



PROCON utilizes custom load testing equipment for more realistic, in-situ load testing of ceramic tile and stone floor assemblies

Ceramic and stone tile floor assemblies have become increasingly complex, and despite product manufacturer laboratory test data, it has become difficult to accurately predict the behavior and performance of these complex assemblies under realistic job-site conditions.

PROCON maintains specialized dynamic load testing equipment conforming to ASTM C627 test protocol that can be used to test and determine the performance rating of ceramic tile and stone floor assemblies in-situ prior to full-scale construction; this equipment is also a valuable forensic tool for determining cause / origin of tile and stone floor assembly defects